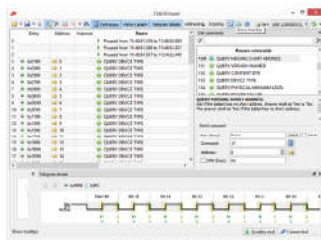


## CAP-62386 + CAP-I-62386

### Protocol Analyzer with Protocol Analyzer Interface for DALI Devices

The protocol analyzer for DALI devices CAP-62386 and the related protocol analyzer interface CAP-I-62386 by who Ingenieurgesellschaft mbH allow to connect a DALI line directly to a computer and to retrieve, configure, and monitor its operating data in a comfortable way.



CAP-62386



CAP-I-62386

Comprising a comprehensive set of functions, the protocol analyzer provides a broad range of applications:

#### Operating

The user-friendly and intuitive graphical user interface, diverse DALI telegram definitions, and the display of all relevant information in a concise manner allow for a comfortable use even by inexperienced users. Only a basic knowledge of DALI is required.

#### Displaying, Evaluating and Searching

The option of displaying and evaluating all telegram definitions and relevant information of DALI telegrams including DALI V2 facilitates, for example, to test the algorithms and reactions of DALI devices and to identify problems in DALI installations. The DALI telegrams can be searched, inter alia, by the command name, command type (special-command, query, etc.), address, instance, feature, and frame format.

#### Addressing

The integrated addressing function allows to address DALI devices including control gears and control devices.

#### Testing

Individual DALI devices as well as entire DALI installations can be tested for correct functioning by sending DALI telegrams or monitoring the telegram traffic.

#### Analysing

Large volumes of DALI telegrams can be analyzed by using labelling and filtering rules. Entries of particular interest can be displayed or highlighted. It is possible, for example, to filter for specific DALI telegrams or telegram types of DALI devices that malfunction or that have certain characteristics, and highlight these.

To enhance the clarity, cyclic scans can be hidden so that only the currently relevant DALI telegrams are displayed.

The exact bit times of specific DALI telegrams can be analysed and displayed. This allows a precise determination of the quality of the telegrams and the identification of collisions or invalid frames.

#### Sending

DALI telegrams can be sent to DALI devices. Applying this function, DALI devices can be polled or parametrized or specific reactions can be tested when verifying the quality of DALI telegrams. Also, it is possible to check whether the DALI devices behave as expected or if deviations occur.

#### Programming

The scripting function serves to execute complex sequences, to perform a variety of tests and diagnostics on individual DALI devices or entire device installations, and to query, perform and display the parametrizations of the DALI devices.

#### Exporting and Exchanging

Protocol files can be exported in HTML, CSV and binary format and be used for many different purposes.

The files can, for example, be archived as evidence of particular behaviours, deployed to further development or installation planning, or used for the data exchange between the development and support teams, e.g. when errors in an existing installation shall be identified and eliminated in a targeted manner.